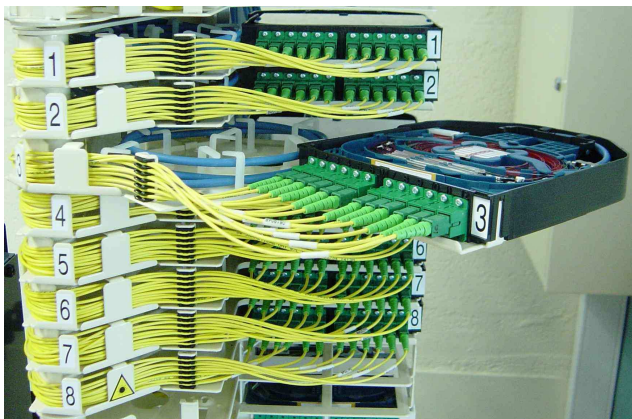




# 3M™ RFO Optical Distribution Frame



**Modular Fibre Distribution System RFO**

The 3M™ Modular RFO is the latest generation of fibre management for central office optical distribution frames.

The modular design makes the installation and progressive equipping of distribution cabling frames easy for both application and network cabling.

The modules are flexible so that each may be equipped according to the types of cable or device or fibre management required

This new design allows a better distribution of fibre management and a 30% increase in the capacity of each column.

## Technical Features

- **Frame**  
The RFO range contains two frame models
  - 2,00 metre high - 6 cable modules - 576 connections
  - 3,25 metre high - 11 cable modules - 1056 connections
- **Composition**  
The fibre management is fixed to an aluminium profile frame:
  - Front: contains 6 to 11 cable modules
  - Right hand side: cable management rings attached to the aluminium profile
  - Left hand side: storage area for patchcords
  - Rear: cable guiding system between frames
- **Cable Modules**  
The cabling modules have a metallic frame equipped with 8 independent swivelling drawers. Each drawer fulfils a number of requirements:
  - anchoring of the tubes coming from the cable break out
  - storage of tube overlength
  - supporting the management trays
  - guiding the module patchcords
- **Management tray**  
The tray meets four requirements
  - anchoring of the tube coming from the cable
  - splice protection tray
  - pigtail management area
  - connector plate

## Benefits

- **Frame**  
The design of the frame gives optimal distribution management:
  - management from the front
  - cable path separation
  - cable path independence

3M RFO system has more than 15 years market presence.

The availability in different heights means that the same product is suitable for use in both high capacity central office installations and for small distribution points.

Two columns of 2 metres will be enough for more than 1000 connection points in a volume close to that of a 19" rack.
- **Cable Modules**  
The cable modules have been developed to match the improvements in the frame. The cable modules are supplied prewired on request. For improved installation efficiency, the module may be placed near to the fusion splicer during the splicing process. The drawers store the excess tube between the cable and the module. Each module is prewired and tested in the 3M factory

# Technical Specifications

General product features	Specifications
<ul style="list-style-type: none"> <li><b>Dimensions</b> <p>Height                      2 metre for 6 modules                                     3,25 metre for 11 modules</p> <p>Depth                        0,7 metre</p> <p>Width including cable modules      0,4 metre</p> <p>Width last frame            0,5 metre</p> <p>Pitch between frames 0,4 metre</p> <p>(alternative configurations available on demand)</p> </li> </ul>	<ul style="list-style-type: none"> <li><b>Cable Module</b> <p>Height                      250 mm</p> <p>Depth                        455 mm</p> <p>Width                        217 mm</p> </li> <li><b>Composition</b> <p>Aluminium profile frame, 8 swivelling drawers in 3 prewired cable modules . Additional modules must be ordered separately</p> </li> </ul>
<ul style="list-style-type: none"> <li><b>Composition</b> <p>Delivered complete with accessories except for the cable break out</p> </li> </ul>	<ul style="list-style-type: none"> <li><b>Installation</b> <p>The cable module is fixed on the RFO aluminium profile frame with screws. The swivelling of the drawers allows access to the cable anchoring area . The trays are simply clipped on the drawer. Labelling identifies each drawer, each module and each connector.</p> </li> </ul>
<ul style="list-style-type: none"> <li><b>Installation</b> <p>Each frame is a complete assembly with accessories mounted in the 3M factory, except for the horizontal guide rings and tubing guides which must be installed on site. Spacing corners are used to fix the frames to the floor. The fixing of the top of the frames must be configured to suit the site.</p> </li> </ul>	<ul style="list-style-type: none"> <li><b>Splitters</b> <p>1x2,1x4 and 1x8 splitters are installed in the dedicated section in the splice tray.</p> <p>1x16 and 1x32 splitters are installed on the frame side.</p> </li> </ul>

Ordering information	Reference	Code
<b>RFO Frames 2,00 metre – 6 modules</b>	<b>N801585A</b>	<b>801585</b>
<b>RFO Frames 3,25 metre – 11 modules</b>	<b>N801584A</b>	<b>801584</b>
<b>RFO Cable Module (three)</b>	<b>N431076A</b>	<b>431076</b>
<b>RFO Tray 12 SC/APC</b>	<b>N541094A</b>	<b>541094</b>
<b>Break Out System DEECAM for 15 D5/3</b>	<b>N711547A</b>	<b>711547</b>
<b>Reel of 200 metre of tube DEECAM D5/3</b>	<b>N581199A</b>	<b>581199</b>

## 3M is a trademark of 3M.

### Important Notice

Buyer and/or user of this 3M product has to make sure before using this product that it is suitable for the intended use. All questions of liability relating to this product are subject – in accordance with the prevailing law – to the Terms of Sale of the selling 3M subsidiary.

3M is trademark of the 3M company. SID is a trademark of the Quante AG.



### 3M Telecommunications

Europe, Middle East & North Africa  
3M Deutschland GmbH  
Carl-Schurz-Strasse 1 . 41453 Neuss . Germany

Tel:                      ++49 (0)2131 / 14-5999  
Fax:                     ++49 (0)2131 / 14-5998  
Internet: www.3MTelecommunications.com

Dr.Nr. 07-401-00500/07.2007 KL Index 0    Rights reserved to make technical alterations.



**Quante Netzwerke GmbH**  
Ahrensburger Str. 8  
D-30659 Hannover

[www.quante-netzwerke.de](http://www.quante-netzwerke.de)

Tel: +49 (0)511 / 74 01 92 - 0  
Fax: +49 (0)511 / 74 01 92 - 100